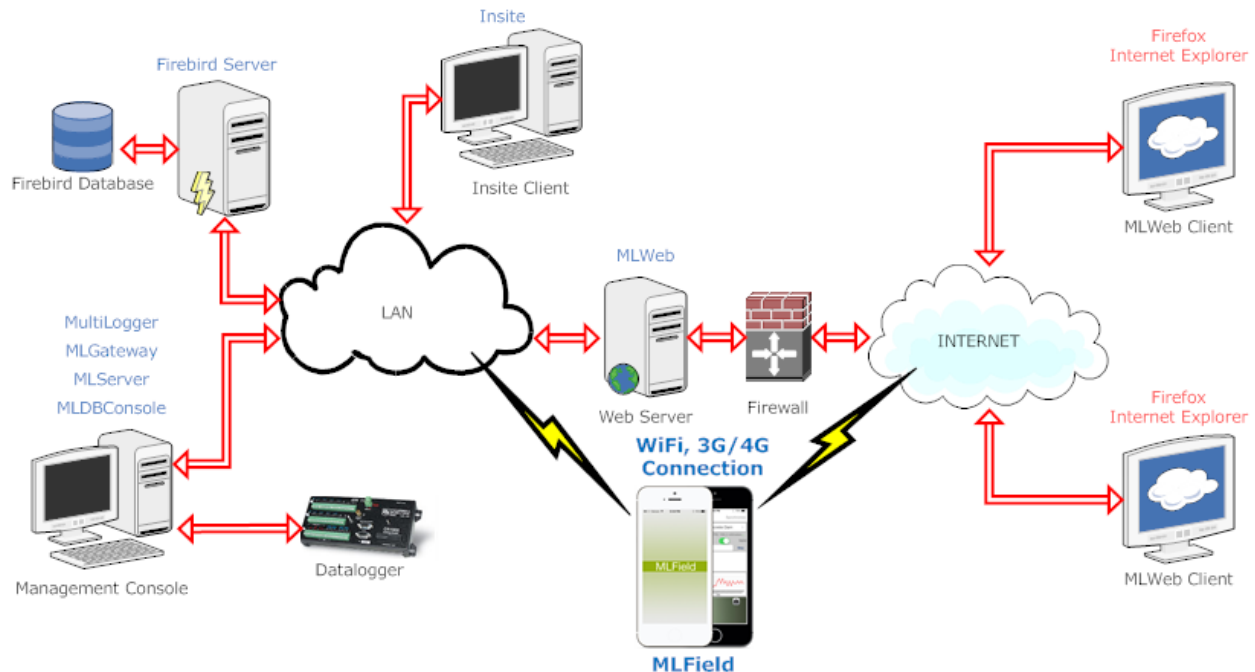


## MultiLogger Suite Demonstration Database Installation

### Introduction

Welcome to Canary Systems' MultiLogger Suite. This is a collection of applications that monitors Instruments, collects their data, and outputs that data into different types of charts and reports. A typical deployment is shown below.



Canary Systems offers a database called Demolog, which you can use with **MLWeb**<sup>®</sup>, **Insite**<sup>®</sup>, **MLDBConsole**, and **MLField**<sup>®</sup>. When you connect to Demolog in these applications, you can view the sample Image Windows, Outputs, Groups, Instruments, Data Elements, Notifications, and Calculated Elements in each interface.

This guide will detail how to download and configure Demolog and how to view it on the desktop applications MLDBConsole and Insite and, if desired, the Web application MLWeb<sup>®</sup> as well as the mobile app MLField<sup>®</sup>.

### Before You Begin

Make sure MLDBConsole, Insite, and the Firebird<sup>®</sup> SQL server are installed and configured on the local computer. See the **MultiLogger Suite Installation Guide** for information.

Once you verify that MLDBConsole, Insite, and the Firebird SQL server are properly installed and configured, proceed to the next section.

## Download and Extract the Database File

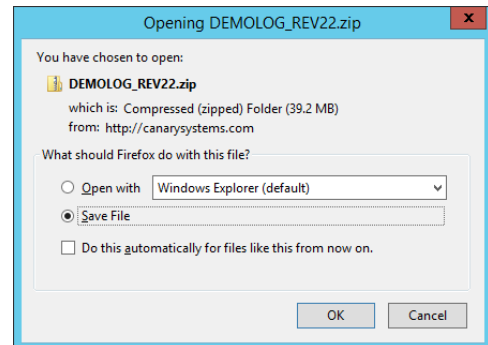
The following steps are required to view Demolog in the desktop applications.

1. Download Demolog's file from Canary Systems' website.
2. Extract Demolog's file to the local computer.
3. Connect to Demolog in MLDBConsole and Insite.

### Download the Database File

You can download the latest version of Demolog from our Software Downloads page at <http://www.canarysystems.com/support/software-downloads/>. Scroll down and look for the links under **Demonstration Database**. For this example, download the *DEMOLOG\_REV22.zip* file to your computer. Depending on your browser, you may see a prompt to open the file with an application, or save it to a specific folder.

If your browser automatically saves the file to the computer's default Downloads folder, you should move the *.zip* file to a local folder for databases for easy retrieval later. If one does not already exist, create one. Open your computer's C: drive and in it, create a new folder named **Databases**. Move the *.zip* file from the Downloads folder to the newly created Databases folder.



### Extract the Database File

Demolog's database file, *DEMOLOG\_LIVE\_REV22.GDB*, must be extracted from the zipped folder into the Databases folder you just created. Double-click on the *.zip* file in the Databases folder to open it. Then click and drag the *DEMOLOG\_LIVE\_REV22.GDB* file into the Databases folder. Close the zipped folder when finished.


### Configure Demolog in MLDBConsole

You must connect to Demolog in MLDBConsole first so that it will be available in Insite. Open MLDBConsole by double-

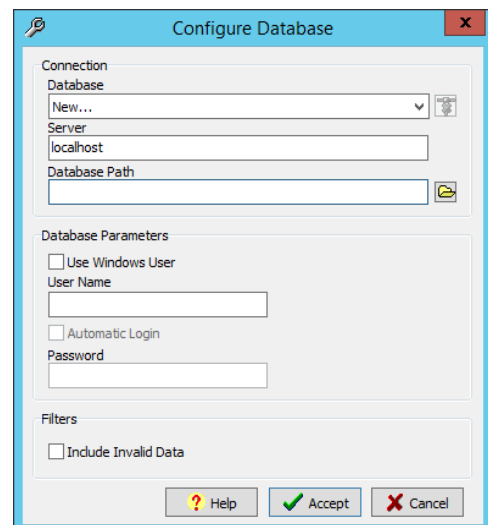
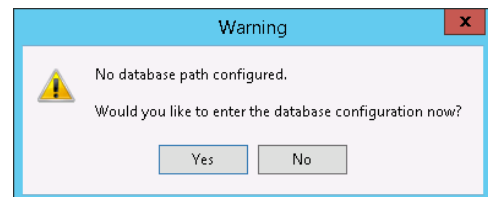
clicking its desktop shortcut  or by opening the application from the MultiLogger Suite group in the Start menu.

When you open MLDBConsole for the first time, you will see the Warning dialog at right. Click Yes to launch the Configure Database form, shown at right. This form configures the database connection.

By default, New... is populated in the Database drop-down menu and the Server is defined as **localhost**, the local computer.

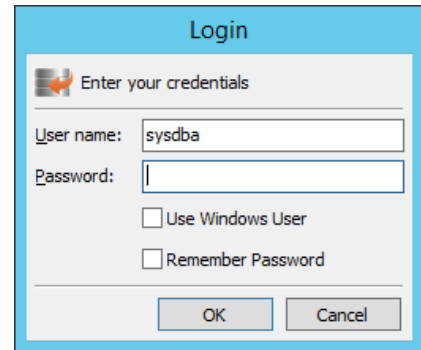
Browse to the correct Database Path by clicking the file browse button . This launches a file browse dialog. Navigate to the C: drive and double-click on the Databases folder. In the folder, select the following file: *DEMOLOG\_LIVE\_REV22.GDB*. Click Open to confirm your selection, and the Database Path field will populate with:

**C:\Databases\DEMOLOG\_LIVE\_REV22.GDB**



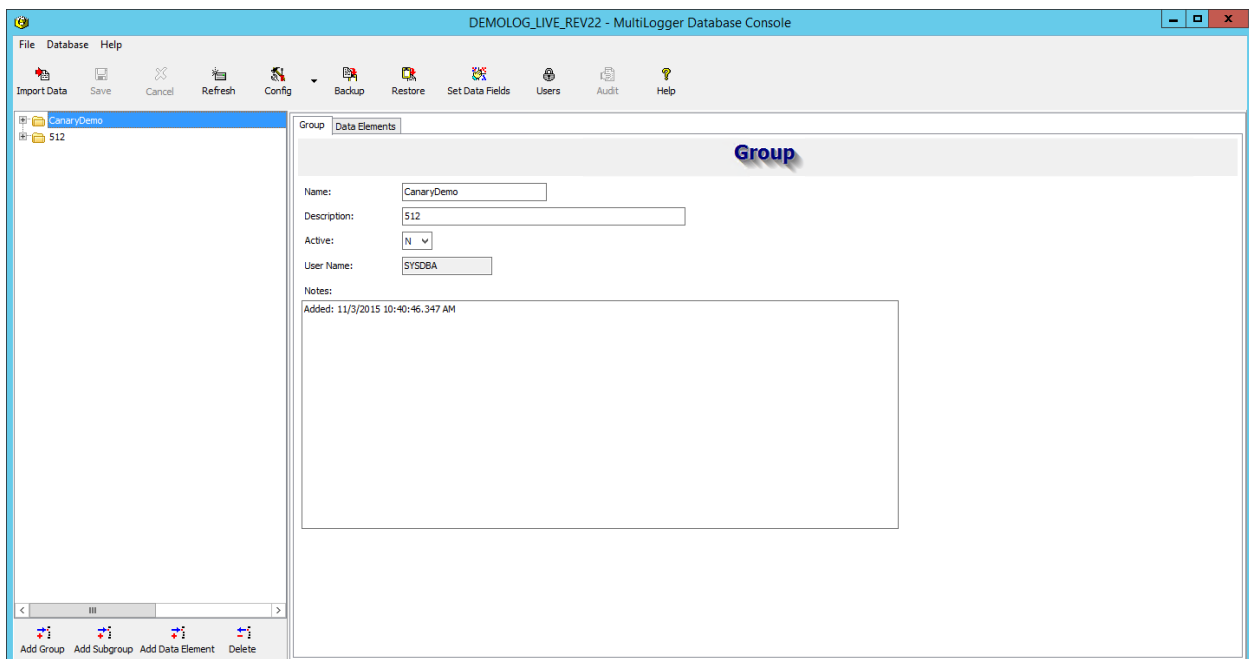
Enter the database's administrative User Name, **sysdba**. Leave the Use Windows User box unchecked, because you will not be using Windows Active Directory to log in for this example. Also, leave Automatic Login unchecked to prevent unauthorized access to Demolog the next time MLDBConsole is opened.

Click Accept when the form is complete. Afterwards, a login form, shown at right, will appear. Enter the administrative Password **masterkey**. Again, Leave the Use Windows User and Remember Password boxes unchecked. Click OK and MLDBConsole will load the database into the database console viewer, shown below.



The image shows a 'Login' dialog box with a light blue border. At the top, it says 'Login' and 'Enter your credentials'. There are two input fields: 'User name:' with 'sysdba' entered, and 'Password:' which is empty. Below these are two checkboxes: 'Use Windows User' and 'Remember Password', both of which are unchecked. At the bottom right, there are two buttons: 'OK' and 'Cancel'.


**Note: The User Name and Password described above are the default administrative credentials the Firebird server uses when it is launched for the first time. If you already have Firebird installed and/or have different administrative credentials, use them for the Username and Password fields, respectively.**



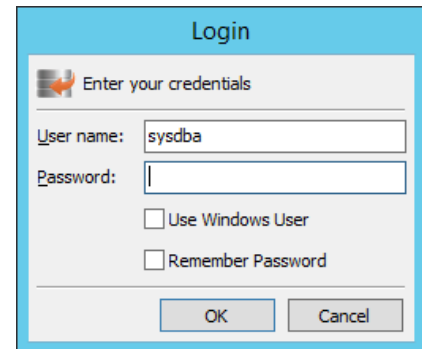
MLDBConsole has several functions that manage and administer the database's components. See the **MLDBConsole User's Guide** for complete information on its features.

Now that the database is connected to MLDBConsole, it can be loaded in Insite, described in the next section.

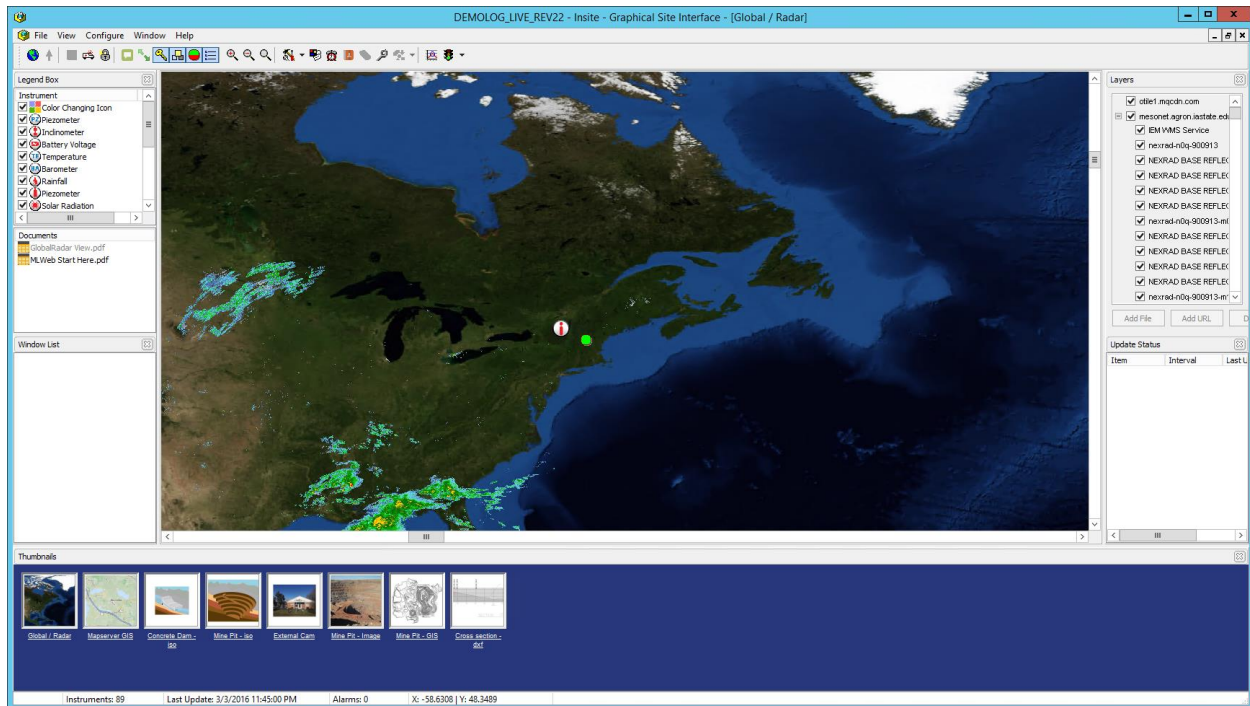
## Configure Demolog in Insite

Open Insite by double-clicking the desktop shortcut , or by opening the application from the MultiLogger Suite group in the Start menu.


Because you configured Demolog in MLDBConsole, when Insite is opened for the first time, you will see a login form like the one in MLDBConsole. The User name is already populated with **sysdba**. Enter the password, **masterkey** (or your own administrative password for the Firebird server). Leave the Use Windows User and Remember Password boxes unchecked to ensure administrative security.

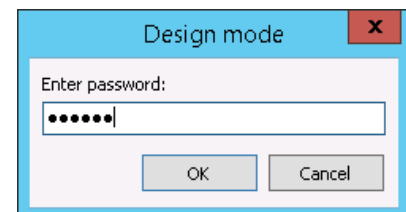


When the form is complete, click OK to load Demolog in Insite. The interface will populate with the database's components in a graphical representation, as shown below.



Insite gives a graphical overview of the database's project. Initially, Insite's functionality will be limited because several features will be read-only or disabled by default. You can access Insite's full functionality by entering Design Mode.

Click on the  icon to launch the Design Mode login form, shown at right. Enter the password **insite**, and click OK to enter Design Mode, and you can view and manipulate all of Demolog's components. See the **Insite User's Guide** for complete information on its features. Any changes you make to the database here will carry over to MLDBConsole when you connect to Demolog again.



MLDBConsole and Insite allow you to view and modify Demolog from the local computer. However, if you want to view the database online, you can configure it in MLWeb® and MLField®. Proceed to the next section if you want to configure and view Demolog in these applications.

## Configure Demolog in MLWeb® and MLField® (optional)

MLWeb® and the mobile app MLField® allow you to access and manipulate the database's components over an Internet connection from any computer or mobile device, respectively.

### Before you Proceed

Make sure MLWeb® and MLField® are installed and configured on your computer and mobile device, respectively. See the **MultiLogger Suite Installation Guide** and **MLField® User's Guide** for more information.


**Note: Before configuring Demolog in MLWeb®, make sure you are using a compatible web browser – either Internet Explorer® 10, Microsoft Edge™, Mozilla® Firefox®, or Google Chrome™.**


After you connect to the database in MLDBConsole and Insite, follow these steps to access Demolog in MLWeb® and MLField®.

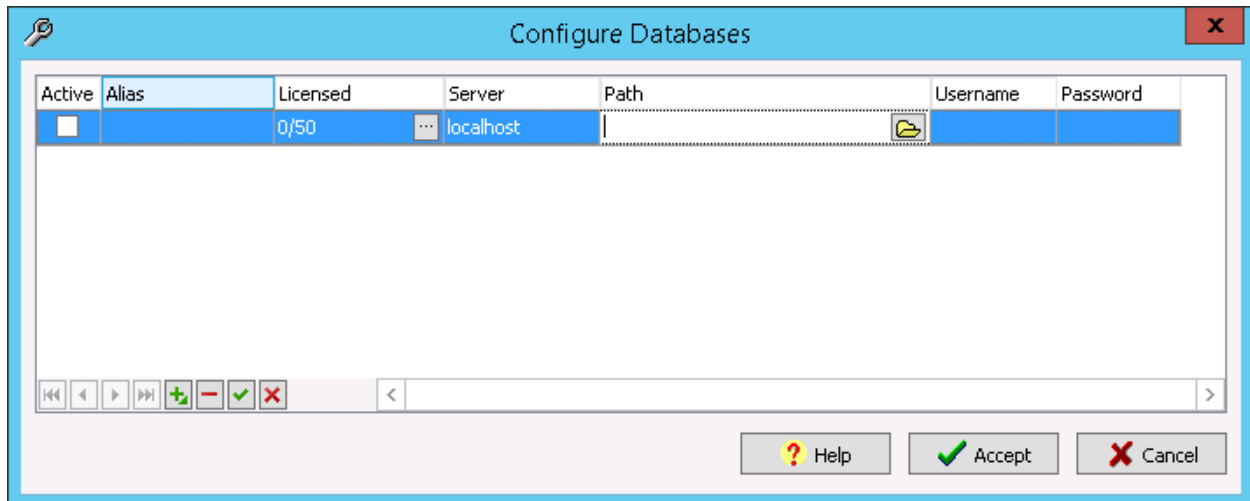
1. Activate Demolog in MLServer.
2. Configure Demolog in MLWeb® and MLField®.

### Activate Demolog in MLServer


In order to view Demolog in MLWeb® and MLField®, you must activate it in MLServer.

Open MLServer from the Start menu. If MLServer is installed as a service on your computer, you can also open it by clicking on the  icon in the system tray. Once MLServer is open, click on the Databases button to launch the Configure Databases form.

Initially, the form's grid will have no database records. Click on the  icon to add a new record to the list, as shown below.

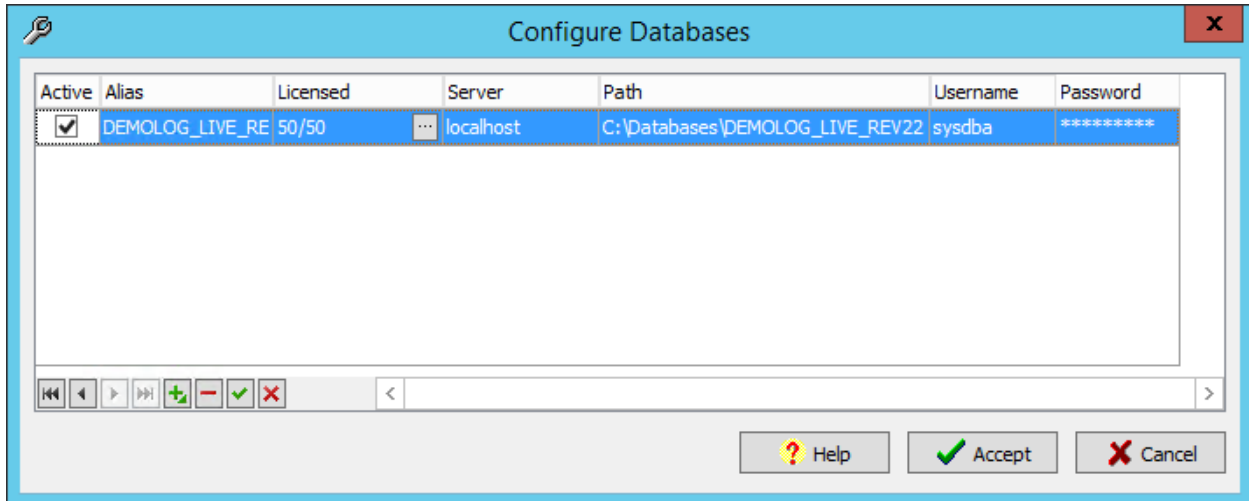


Active	Alias	Licensed	Server	Path	Username	Password
<input type="checkbox"/>		0/50	localhost			

In the Path column, click on the Browse button  to launch a file browse dialog. Navigate to the *DEMOLOG\_LIVE\_REV22.GDB* file in the **C:\Databases** folder as described in the previous sections. Click on the file and click Open on the dialog to define the database path.

When the Path is defined, the Alias cell will automatically populate with the database's name, "DEMOLOG\_LIVE\_REV22." Connect to the database by typing in the following credentials: Username: **sysdba**; Password: **masterkey** (or your own administrative password for the Firebird server).

Click on the checkbox in the Active column to activate the database. If successful, the Licensed column will populate with 50 out of 50 licensed elements, as shown on the next page.



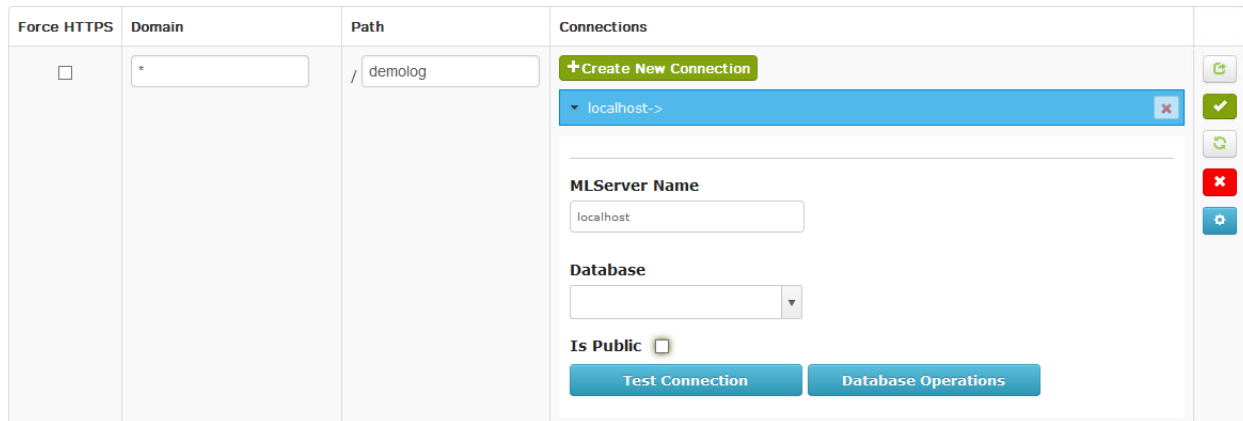
Finally, click on the  icon to save the database's record to the grid.

Now that the database is activated, you can connect to it in MLWeb® and MLField®. Proceed to the next section to configure Demolog in MLWeb®.

### Configure Demolog in MLWeb®

Open the MLWeb® admin page on the local computer by typing **localhost/admin** into a Web browser's address bar. The admin page contains a list of websites hosted by the local computer. Initially, there will be no entries.

Click the **Create New Site** button to add a new site to the list. You will see a series of columns labeled Force HTTPS, Domain, Path, and Connections, shown below.





For the new entry, leave the Force HTTPS box unchecked if you are not planning to use a Secure Sockets Layer (SSL) Certificate for the local domain. Leave the Domain field with an asterisk to use the default Domain configuration.

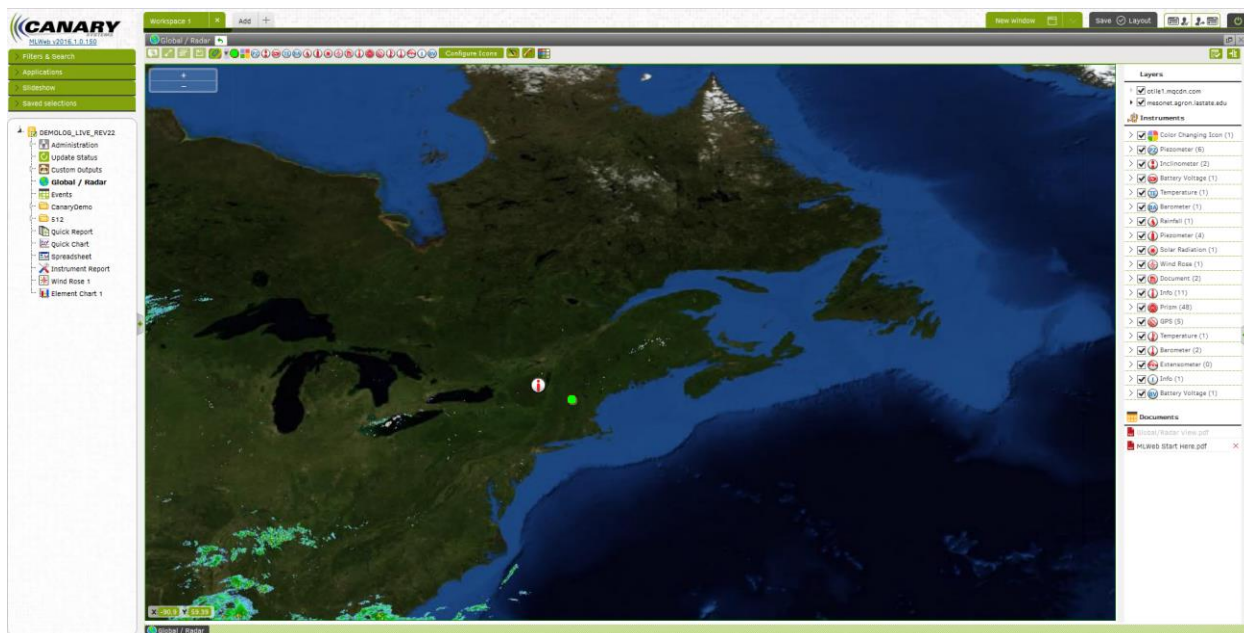
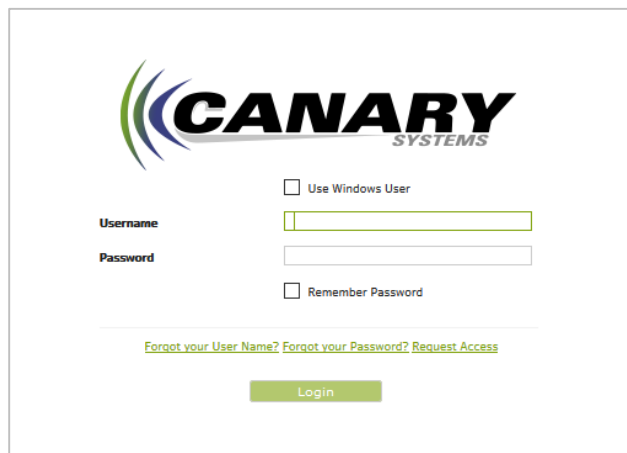
Please enter **demolog** in the Path field to define a path to the database. This field may remain empty, but when hosting multiple databases on the same server, all but one must have a unique field defined.

Create a new database connection by clicking on the **Create New Connection** button in the Connections cell. This will reveal additional fields and buttons, shown on the previous page. In the Database drop-down, select **DEMOLOG\_LIVE\_REV22** from the list.

Click on the **Test Connection** button. On the login form, leave the Use Windows User checkbox unchecked and log in with the administrative database credentials, **sysdba** for Username and **masterkey** for Password (or your administrative credentials for the Firebird server), and wait for a message that reads, “Connection is Successful.” If the message appears, close the prompt and return to the admin page.

Click the  button to save the database connection and launch the website in MLWeb® by clicking on the  button, which loads the login page.

At the login page, enter the administrative login credentials, the Username **sysdba** and the Password **masterkey**. Leave the Use Windows User and Remember Password boxes unchecked to protect administrative access to the website. Click Login to view the database’s interface in MLWeb®, shown below.



MLWeb® gives a live graphical overview of a database’s components. See the **MLWeb® User’s Guide** for complete information on its features.

Any changes you make to the database will carry over to Insite, MLDBConsole and MLField® when you connect to Demolog from those applications.

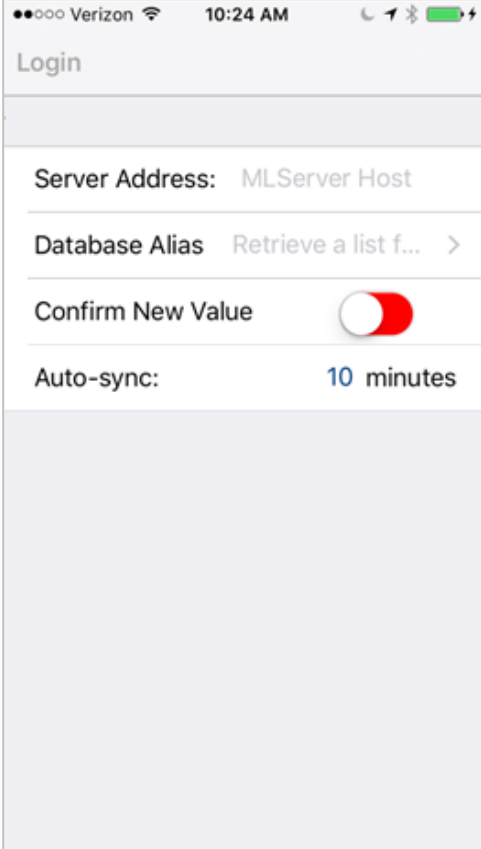
There is one more application to configure Demolog in, the mobile app MLField®. Proceed to the next section to learn more about it.

## Configure Demolog in MLField®

When you open MLField® on your iOS® or Android™ mobile device for the first time, you will be prompted to enter the MLServer host, as shown at right. Enter the IP address of the host server in the Server Address field. Once the IP is verified, you can select **DEMOLOG\_LIVE\_REV22** as the Database Alias to set up the connection.

Afterwards, tap Login in the upper left-hand corner of the interface and enter the Administrator login credentials, **sysdba** for the User ID and **masterkey** for the Password (or your administrative credentials for the Firebird server). Tap the Login button to connect to Demolog. The app will load Demolog's Data Elements into the interface, shown below right.

In MLField®, you can visit Data Elements and Instruments in the field and collect their data in the app. Also, you can view Data Elements and Instruments' information remotely, and update their data manually. See the **MLField® Software User's Guide** for complete information



Verizon 10:24 AM

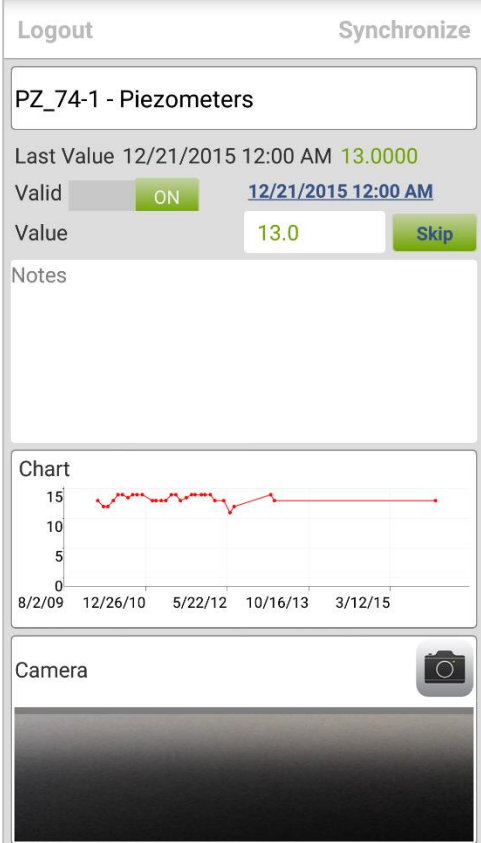
Login

Server Address: MLServer Host

Database Alias Retrieve a list f... >

Confirm New Value

Auto-sync: 10 minutes



Logout Synchronize

PZ\_74-1 - Piezometers

Last Value 12/21/2015 12:00 AM 13.0000

Valid  ON 12/21/2015 12:00 AM


Value 13.0 Skip

Notes

Chart

15  
10  
5  
0

8/2/09 12/26/10 5/22/12 10/16/13 3/12/15

Camera 

Canary Systems®, MultiLogger®, MLSuite®, MLField®, and MLWeb® are registered trademarks of Canary Systems, Inc.

Windows® is a registered trademark of the Microsoft Group of companies.

Firebird® is a registered trademark of the Firebird Foundation, Inc.

Internet Explorer® is a registered trademark of the Microsoft Corporation.

Microsoft Edge™ is a trademark of the Microsoft Corporation

Mozilla® and Firefox® are trademarks of the Mozilla Foundation.

Google Chrome™ and Android are trademarks of Google Inc.

iOS® is a registered trademark of Apple, Inc.

All other trademarks are property of their respective owners, All Rights Reserved.